

Música del día de San Marcial

Irún, 30 de Junio

Revisión: Angel Briz Lázcoz
2007

Diana de Villarrobledo

p *f* *p* *f*

9 *mp* *cresc...* *f*

16 3 1 2 3 1 2 *f* *a coda* ⊕

27 1

34 2 *menos, dulce* *p* *p*

43 1 2 *mf*

52 *p*

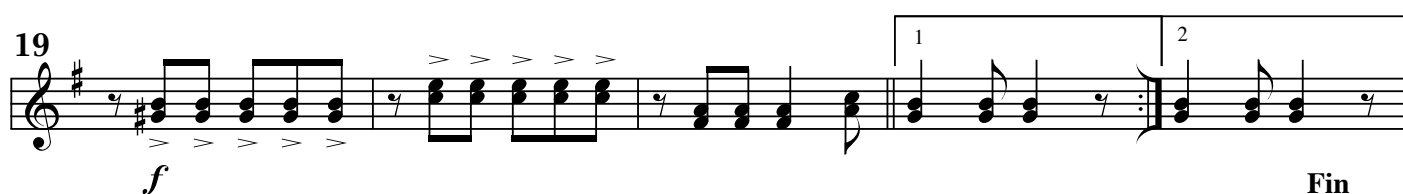
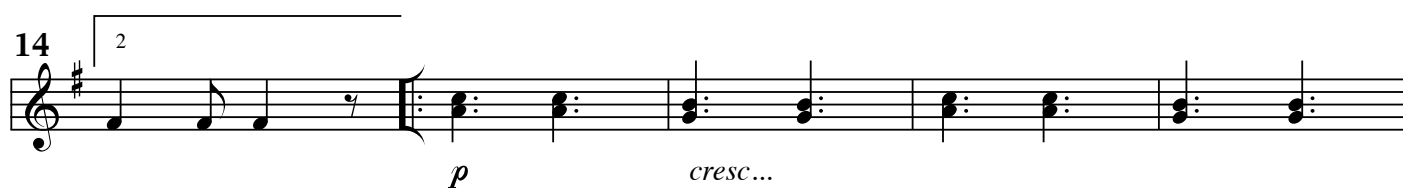
60 D. c. hasta la ⊕
y salta a Coda

66
CODA

Jol6

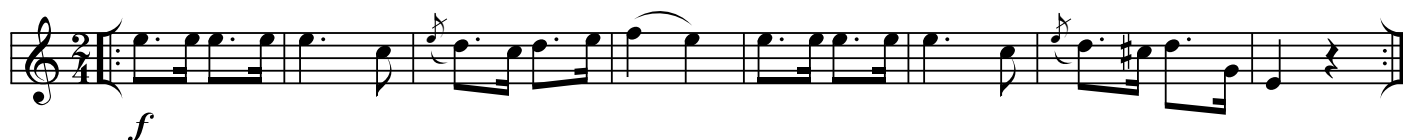
The musical score for 'Jol6' is written in treble clef with a key signature of one sharp (F#) and a 6/8 time signature. It consists of ten staves of music. The first staff begins with a dynamic marking of *f*. The second staff includes first and second endings, with dynamics *f*, *p*, *f*, and *p*. The third staff continues with dynamics *f*, *p*, *f*, *p*, and *f*. The fourth staff starts with a triplet of eighth notes and a dynamic of *f*. The fifth staff features first and second endings, a fourth ending, and a final measure with a whole rest. The sixth staff includes first and second endings, a triplet of eighth notes, and a dynamic of *f*. The seventh staff has first and second endings and a dynamic of *f*. The eighth staff begins with a dynamic of *f* and a first ending. The ninth staff starts with a dynamic of *mf* and a *cresc...* marking. The piece concludes with a *D. c.* (Da Capo) instruction and the word *Fin*.

Rataplán



Descarga

Vivo



Fagina

Musical score for 'Fagina' in G major, 2/4 time. The score consists of five staves of music. The first staff begins with a dynamic marking of *f* and a section symbol (§). The second staff includes first and second endings. The third staff ends with a dynamic marking of *mf*. The fourth staff continues the melody. The fifth staff includes first and second endings, a dynamic marking of *f*, and the instruction 'Fin' followed by 'D. C. a la §'.

Himno de San Marcial

Musical score for 'Himno de San Marcial' in G major, 3/8 time. The score consists of three staves of music. The first staff includes dynamic markings of *p* and *mf*. The second staff includes first and second endings, and dynamic markings of *p* and *f*. The third staff includes first and second endings, a dynamic marking of *f*, and the instruction 'D. c.' followed by 'Fin'.

A. B. - San Marcial - 06/07